

**efi** REGGIANI ReNOIR TOP

*Digital Printing Machine for Direct Printing on Fabric*

TOP  
performance  
without  
compromise.



# Productivity makes the difference

Outstanding productivity, accuracy, and performance: the ReNOIR TOP equipped up to 32 heads and available in 180-240-340 cm printing width, is the perfect solution for large production needs. Its 32 heads are especially developed for increasing productivity and efficiency.

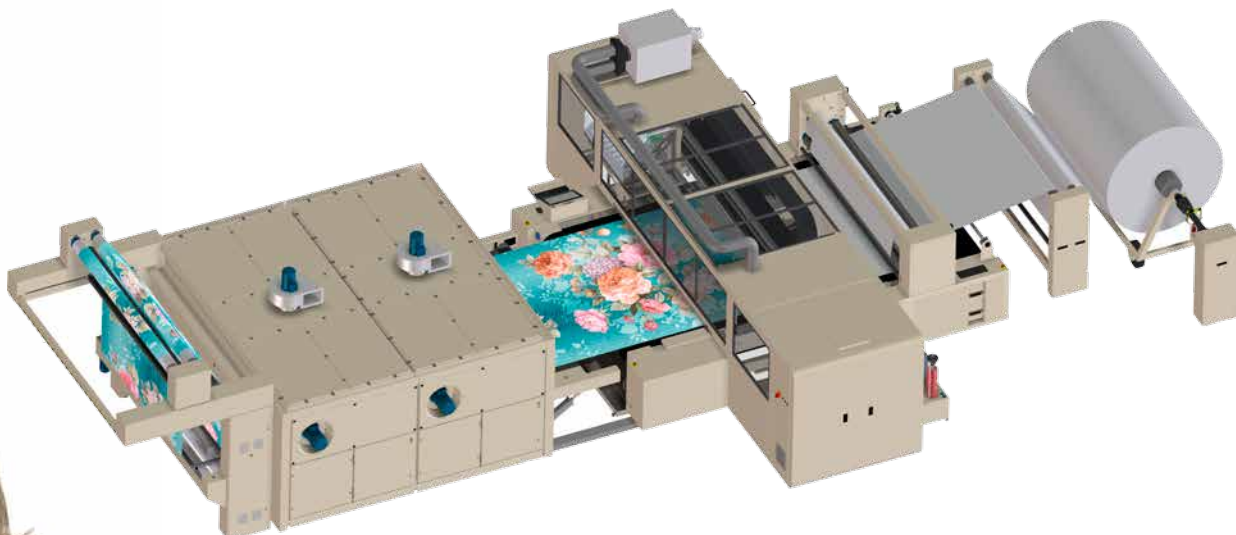
| APPLICATIONS         |   |
|----------------------|---|
| Fashion              | ✓ |
| Home textile         | ✓ |
| Automotive           | ✓ |
| Outdoor              | ✓ |
| INKS                 |   |
| Disperse direct      | ✓ |
| Reactive             | ✓ |
| Acid                 | ✓ |
| Disperse sublimation | ✓ |
| Textile pigment      | ✓ |

| SUBSTRATES             |   |
|------------------------|---|
| Cotton                 | ✓ |
| Blends                 | ✓ |
| Polyester              | ✓ |
| Polyamide              | ✓ |
| Silk                   | ✓ |
| Viscose                | ✓ |
| Polyester and elastane | ✓ |
| Polyamide and elastane | ✓ |
| Wool                   | ✓ |

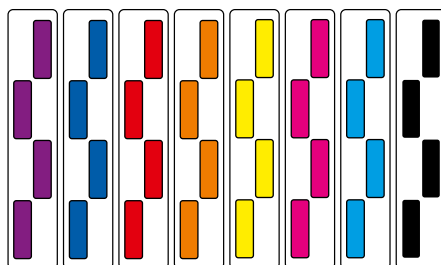
| RESOLUTION | PASS | TOP 180 cm |      | TOP 240 cm |       | TOP 340 cm |       |
|------------|------|------------|------|------------|-------|------------|-------|
|            |      | LMH        | SQMH | LM/H       | SQM/H | LM/H       | SQM/H |
| 300x600    | 1    | 720        | 1200 | 600        | 1400  | 500        | 1600  |
| 400x600    | 1    | 600        | 1040 | 520        | 1200  | 440        | 1400  |
| 600x600    | 1    | 450        | 760  | 380        | 860   | 310        | 980   |
| 600x1200   | 2    | 440        | 740  | 370        | 840   | 300        | 950   |
| 800x1200   | 2    | 330        | 560  | 280        | 640   | 230        | 720   |
| 600x2400   | 4    | 210        | 360  | 180        | 210   | 150        | 460   |
| 1200x2400  | 4    | 210        | 360  | 180        | 210   | 150        | 460   |







8 COLOURS  
32 HEADS  
8 EACH ROW



## Specifications

- 180-240-340 cm printing width
- Production speed  
1.200-1.400-1.600 sqm/h
- 32 printing heads
- From 4 to 72 pl drop size
- Up to 2400 DPI
- Fabric weight from 30 to 450 gr/sqm
- **Fabric feed (Entry):**  
- small roll unwinder up to  $\varnothing$  400 mm
- **Fabric take-up (Exit):**  
- fold  
- small roll winder up to  $\varnothing$  400 mm  
- fold and small roll winder up to  $\varnothing$  400 mm
- **Dryer:**  
- two industrial chambers

## Optional

- **Fabric feed (Entry):**  
- big roll unwinder (A frame) up to  $\varnothing$  1,600 mm  
- fold  
- segmented roller
- **Fabric take-up (Exit):**  
- big roll winder (A frame) up to  $\varnothing$  1,600 mm

\* Further colour configurations available

## Features

- Ink management: in line double degassing and filtering
- Blanket washing: continuous, switchable. With air blade
- Adhesion method: permanent, thermoplastic, resin
- Air blade for optimal substrate adhesion
- Color feeding: Reggiani Dyespenser® (20L)
- Embedded system for adhesive application
- Dynaplast: Reggiani patented system
- High-precision transportation belt
- Full variable drop size
- High efficiency dryer with removable filters
- Ups on board for uninterruptable power supply, raid disk for data redundancy and automatic back-up, embedded diagnostic with database integration
- Head crash protective system
- High-efficiency head wiping
- Ink recovery system (improved)
- Curing: in line polymerisation/heat curing dryer
- Real time image processing (optional)
- Pneumatic or static discharge adhesion system (optional)
- Bypass for fumes extraction during in-line curing (optional)
- Ink system open to certified suppliers
- Self-cleaning
- Software open to main RIP vendors

## Advantages

- Both for sampling and production
- Multiple customisations available
- Quick answer to production requests
- No need of head alignment
- Low maintenance costs
- Lowest ink usage
- Easy maintenance
- Easy access to main machine modules
- Easy to use
- Easy colour refill
- Easy operation
- Suitable for 24/7 operation
- One operator can manage multiple machines

## Improvements

- New high-efficiency dryer
- New design
- New electronic and user interface. Diagnostic embedded
- New blade print server with UPS
- New enhanced ink recovery system, up to 95% of ink saving
- Improved and simplified head layout

## EFI fuels success.

We develop breakthrough technologies for the manufacturing of signage, packaging, textiles, ceramic tiles, and personalised documents, with a wide range of printers, inks, digital front ends, and a comprehensive business and production workflow suite that transforms and streamlines the entire production process, increasing your competitiveness and boosting productivity. Visit [www.efi.com/reggiani](http://www.efi.com/reggiani) or call +39 035 3844511 for more information.



Nothing herein should be construed as a warranty in addition to the express warranty statement provided with EFI products and services.

The APPS logo, AutoCal, Auto-Count, Balance, Best, the Best logo, BESTColor, BioVu, BioWare, ColorPASS, Colorproof, ColorWise, Command WorkStation, CopyNet, Cretachrom, Cretaprint, the Cretaprint logo, Cretaprinter, Cretaroller, DockNet, Digital StoreFront, DirectSmile, DocBuilder, DocBuilder Pro, DocStream, DSFdesign Studio, Dynamic Wedge, EDOX, EFI, the EFI logo, Electronics For Imaging, Entrac, EPCount, EPPhoto, EPRegister, EPStatus, Estimate, ExpressPay, Fabrivid, Fast-4, Fiery, the Fiery logo, Fiery Driven, the Fiery Driven logo, Fiery JobFlow, Fiery JobMaster, Fiery Link, Fiery Prints, the Fiery Prints logo, Fiery Spark, FreeForm, Hagen, Inkintensity, Inkware, Jettrion, the Jettrion logo, LapNet, Logic, MiniNet, Monarch, MicroPress, OneFlow, Pace, PhotoXposure, Printcafe, PressVu, PrinterSite, PrintFlow, PrintMe, the PrintMe logo, PrintSmith, PrintSmith Site, PrintStream, Print to Win, Prograph, PSI, PSI Flexo, Radius, Rastek, the Rastek logo, Remoteproof, RIPChips, RIP-While-Print, Screenproof, SendMe, Sincolor, Splash, Spot-On, TrackNet, UltraPress, UltraTex, UltraVu, UV Series 50, VisualCal, VUTEk, the VUTEk logo, and WebTools are trademarks of Electronics For Imaging, Inc. and/or its wholly owned subsidiaries in the U.S. and/or certain other countries.